

Table of Contents

Academia	2
Business	2
Clinical Operations.....	3
Consulting.....	4
Data Science	5
Engineering.....	5
Entrepreneurship & Executive Leadership	6
Industry Science.....	7
Medical Science	8
Nonprofit	9
Science Communication	10

Academia



Douglas Richardson

**Director of Imaging
Harvard University**

Since 2013, Doug has been the Director of Imaging at the Harvard Center for Biological Imaging, and, since 2016, a lecturer in Harvard's Department of Molecular and Cellular Biology. Doug investigates, evaluates and teaches a wide range of light microscopy techniques including super-resolution, lightsheet, multi-photon, live-cell and confocal microscopies, as well as tissue clearing techniques and image processing methodologies. Doug received his PhD from the Department of Pathology and Molecular Medicine at Queen's University (Canada) in the field of cancer cell biology. Following his graduate studies, he continued to refine his skills as an Alexander von Humbolt postdoctoral fellow in the lab of Professor Stefan Hell at the Max Planck Institute for Biophysical Chemistry. Here, Doug worked on a number of biological applications for super-resolution imaging.

Tamar Aprahamian Putiri

Founder (JetPub Scientific Communications)

Concurrently Assistant Professor (BU School of Medicine)
(See bio under "Entrepreneurship & Executive Leadership")

Business



Ami Ashar-Patel

**Scientific Inside Sales Representative
STEMCELL Technologies**

In her current role, Dr. Ami Ashar-Patel is a liaison between scientists and STEMCELL Technologies' research products. Ami received her PhD in biochemistry/molecular biology from the University of Massachusetts Medical School at Worcester where she was concurrently the Director of Industry Outreach for the Industry Exploration Program and led site visits to several biotech and pharmaceutical companies in the Boston area. Her PhD thesis work involved bioinformatics, RNA biology, and developing RNA therapeutics. She also earned a bioscience management certificate from Keck Graduate Institute by completing a 1-year mini-MBA style program designed especially for scientists. Ami is passionate about raising awareness for non-academic careers available for scientists.



Stanley O. King II

**Vice President, Corporate Development
Emulate, Inc.**

Stan has managed intellectual property, developed licensing strategies, and executed deals for a wide variety of life sciences technologies, all with the goal of commercializing early-stage research discoveries. In addition, he worked internationally with a non-governmental organization developing strategies to foster an entrepreneurship ecosystem in Rwanda. Prior to joining Emulate, Stanley worked in business development and licensing roles at Boston Children's Hospital's Technology Innovation and Development Office, the Wyss Institute for Biologically Inspired Engineering at Harvard, the MIT Technology Licensing Office, and at UVa Innovation. Stan has a BS from Florida A&M University and a PhD from the University of Virginia.

Clinical Operations



Preethi M. Swamy

**Clinical Trial Associate
Kadmon Holdings, Inc.**

Preethi Swamy is a pharmacist experienced in managing the clinical developmental operations of clinical trials across multiple therapeutic areas, focusing primarily on immunology/oncology and rare diseases. In her current role, she works closely with the Director of Clinical Operations and the Clinical Trial Manager in the execution of clinical trial studies from study start-up to vendor outsourcing and site selection. Previously, Preethi has worked at an academic research site associated with the Dana-Farber Cancer Institute and at the contract research organization Quintiles (now IQVIA). Preethi holds an MS in clinical investigation, which contributes to her extensive passion, knowledge, and skills in drug development.



Rachel Chasse

**Senior Clinical Trial Specialist
Pfizer**

In her position at Pfizer, Rachel assists clinicians and study teams with various study start-up and conduct activities. She helps to ensure the trials adhere to the highest standards of local, internal, and international guidelines of human protection and data integrity, including applying in-depth knowledge of ICH and GCP guidelines to everyday tasks such as advising on regulatory

documents. Prior to her current position, Rachel had earned her BA in psychology from Baylor University where she received her introduction to research while working in a social psychology lab. Following her BA, Rachel worked as a psychometrician and clinical research coordinators within the Alzheimer's Disease Research Center and Genetics Core at Washington University in St. Louis. During this time, Rachel earned her MS in clinical research Management.

Consulting



Anne Joseph

Consultant
Back Bay Life Sciences Advisor

Originally from Trinidad, Anne began her current position in 2017. Her role places particular emphasis on financial and strategic guidance for her life science and medical device clients. Leveraging her scientific background and expertise, she has helped both startups and large-cap companies navigate complex decisions pertaining to commercial, research and development, corporate and business development, and transactional opportunities. She earned her PhD in neuroscience from Brandeis University where her research unraveled the interplay of molecular pathways that stabilize neuronal networks. Prior to graduate school, Anne was a research scientist at Boston Children's Hospital where she researched the fundamental molecular mechanisms of epilepsy and their clinical applications.



Leah Strickling

Analyst
Back Bay Life Sciences Advisor

Leah joined Back Bay Life Sciences Advisors in 2017 where she works with a team to strategically advise biotechnology, pharmaceutical, and medical device clients on the best approaches to answering commercial and scientific questions. Previously, she worked within the pharmaceutical industry where she had various commercial and medical roles spanning a variety therapeutic areas. Leah studied biomedical sciences with a focus in pharmacology at McGill University (Montreal, Canada).

Data Science

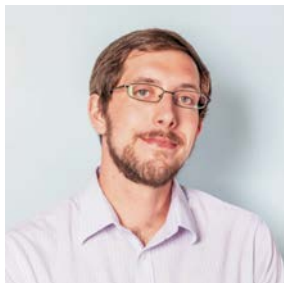


Liliya Lavitas

**Data Scientist
Amazon**

Liliya joined Amazon's Alexa team last November in the Alexa Machine Learning (ML) department working on the internalization of Alexa devices. Lily is responsible for data-driven improvements to Alexa's spoken language understanding models, such as working with a team to build and release ML models that elevate customer experience and adds features to the existing models to ensure continuous improvement of the natural language understanding algorithms. Prior to joining Amazon, Liliya graduated from Boston University with a PhD in statistics and had concurrently worked as a part-time data scientist for Liberty Mutual where she started as a summer intern before becoming full-time. There, the projects she has worked on range from risk-based pricing models for large corporate contracts to network-based analysis of internal employee's performance and satisfaction based on self-reported data.

Engineering



Josiah Sliz

**Principal Engineer
Emulate, Inc.**

Josiah's work centers on developing organ-on-chips (OOC), computational models, instrumentation, and experimental designs that enable compound testing and pharmaceutical development on the OOC platform. Prior to joining Emulate, Josiah was a microfluidics engineer with the Wyss Institute for Biologically Inspired Engineering at Harvard University where he played an integral role on the engineering team responsible for developing Emulate's OCC platform. Working in the areas of OOC design and instrumentation development, he established innovative solutions to complex platform challenges. Josiah received his master's degree in biomedical engineering with a concentration in biomedical mechanics and biomaterials and a bachelor's in biological and environmental engineering from Cornell University.



Kelly McQuighan

Software Engineer
Google

Kelly works on the system user interface team at Google on Wear OS, the software powering Android-based smart watches. Prior to joining Google, Kelly earned a PhD in applied mathematics at Brown University where she researched differential equations with a focus on applications to pattern formation. Subsequently, she held a 3-year postdoctoral appointment in the Department of Mathematics and Statistics at Boston University before deciding to pursue a career in industry.



Serena Dao

Test Engineer
Ginkgo Bioworks

Serena is part of the Test Team at Ginkgo Bioworks focusing on assay development and analysis of yeast and bacteria samples in cultured media. Prior to Ginkgo, she work in a spectrum of different fields from collecting ocean samples off the coast of California for microbiological analyses to creating handheld high-pressure mass spectrometers to test for chemical warfare agents. She holds a BS from Northeastern University with a background in chemistry and physics.

Entrepreneurship & Executive Leadership



Jennifer Reilly

President & Chief Operating Officer
Safety Partners, Inc.

Leveraging over 20 years of experience in health & safety and lab operations, Jennifer has developed, managed, and implemented client programs specializing in radiation, chemical, and biological safety while taking on increasing operational responsibilities at Safety Partners. Prior to joining Safety Partners, Jennifer spent 5 years at Alnylam Pharmaceuticals, and held research positions at Biogen, Inc.; Curis, Inc. (formerly Ontogeny, Inc.); and Brigham and Women's Hospital. Jennifer received a master of liberal arts degree in biology from Harvard University and a BA in biology from Saint Anselm College.



Tamar Aprahamian Putiri

**Founder
JetPub Scientific Communications**

In 2015, Dr. Aprahamian founded JetPub Scientific Communications, which specializes in strategic support and high-quality writing services for the life sciences industry and academic institutions alike. Years of research experience solidified the importance of disseminating basic and clinical research to the scientific community, in order for the world to make greater strides in advancing research to develop novel disease therapies. Tamar is not only responsible for business development and client leads, but also content writing and editing and managing several PhD-level contract editors for a variety of research projects and marketing copies for their clients. Tamar also continues to hold a position as an assistant professor at Boston University School of Medicine and has prior experience as a Principal Scientist and Preclinical Team Lead at a start-up venture of Flagship Pioneering. Tamar received her BS in biology from Boston College; PhD in cell, molecular, and developmental biology from Tufts University; and holds credentials as a certified project management professional.

Stanley O. King II

Vice President, Corporate Development (Emulate, Inc.)

(See bio under “Business”)

Industry Science



Magdalena Kasendra

**Principal Investigator
Emulate, Inc.**

Magdalena leads the effort in developing and qualifying the primary Intestine-Chip model to be applied for the evaluation of safety and efficacy of new therapeutics, discovery of new biomarkers and drug candidates, and for uses in the field of precision medicine at Emulate, Inc. She completed her PhD at Novartis, focused on the development of vaccines against several common human infectious disease pathogens with high mortality rates, including *C. difficile*, *N. meningitidis* and enteropathogenic *E. coli*. As a postdoctoral fellow at the Wyss Institute for Biologically Inspired Engineering at Harvard, she established a novel Intestine-Chip model that uses intestinal epithelium isolated from human biopsies and created the complex, dynamic microenvironment of the human intestine. Magdalena has received multiple awards for her research, including a Marie Curie Fellowship, one of the most prestigious and competitive fellowships in Europe.



Samantha “Sami” Hiemer

Scientist
Rheos Medicines

Sami is currently a biologist at Rheos Medicines, a recently launched Third Rock Ventures company focused on tuning immune cells to bring precision treatments to immune-mediated diseases. Start-up life allows her to wear many hats including bench scientist, project manager, and creative artist. Prior to this, Sami completed an industry postdoctoral appointment in the Inflammation and Immunology department at Pfizer where her research focused on understanding T-cell metabolism in autoimmunity. She earned her PhD in biochemistry from Boston University by studying the control of the Hippo signaling pathway in the context of cancer biology.

Tamar Aprahamian Putiri
Founder (JetPub Scientific Communications)

Previously Principal Scientist/Team Lead (Flagship Pioneering)
(See bio under “Entrepreneurship & Executive Leadership”)

Medical Science



Jennifer Campbell

Senior Medical Science Liaison
Janssen Biotech (Johnson & Johnson)

At Janssen, Dr. Campbell is responsible for providing scientific and clinical support on various biologic therapies to health care providers throughout the Northeast. Prior to joining Johnson and Johnson, she was a regional scientific manager and medical science liaison supporting a newly approved drug-device combination to treat actinic keratosis. Jennifer’s previous work experience includes being a medical science liaison with Stemcentrx, Inc. supporting the oncology franchise, and as Manager of Research Integrity and Compliance at Fenway Health, where she oversaw research activities in approximately 150 Phase I-IV clinical trials across a vast portfolio of therapeutic areas. Dr. Campbell received her doctorate from Boston College elucidating mechanisms by which HIV gains entry into the brain and examining novel therapies to reduce monocyte/macrophage traffic into tissues during HIV infection.

Nonprofit



Jean Fan

**Founder and Director
CuSTEMized**

Jean Fan is founder and director of 501(c)3 nonprofit CuSTEMized, which engages, encourages, and empowers young girls in STEM by providing them with tangible products and educational experiences that foster a positive scientific identity from a young age. Jean is also currently a postdoctoral fellow in the lab of Dr. Xiaowei Zhuang at Harvard University. She received her PhD in bioinformatics and integrative genomics at Harvard Medical School under the mentorship of Dr. Peter Kharchenko and in close collaboration with Dr. Catherine Wu at the Dana-Farber Cancer Institute. Jean's research interests center around developing computational methods for identifying and characterizing heterogeneity at the single cell level, particularly in the context of cancer, using multi-omics approaches.

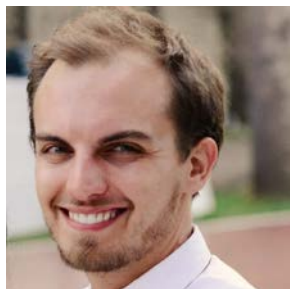


Phil Getzen

**Co-Founder
Gique**

Phil a co-founder of Gique, a Boston-based nonprofit 501(c)(3) organization which exists to engage students in creative, hands-on curricula, experiments and activities that develop their passion and potential to succeed in science, technology, engineering, art + design, and math (STEAM). Phil is also currently a product manager at Twitter Boston where he leads the Media Consumption team, building the foundational video technology used at Twitter. Prior to his current position, Phil was a program manager at the Microsoft New England Research & Development Center working on mobile device and application management and was a co-founder and developer at TempoRun. Phil is passionate about the intersection of art & technology, building social equity, and improving inclusion & diversity, particularly in tech.

Science Communication



Matt Povlovich

**Editor
Cell Press**

Matt is the editor of *Trends in Biotechnology (TIBTECH)*, the leading reviews journal in the applied biosciences. *TIBTECH* covers the broad scope of biotechnology, including biomaterials, synthetic biology, biocatalysis, drug development, and the policy and regulatory framework surrounding biotech. As editor, Matt oversees the peer review process, commissions articles for publication, and drives the journal's content strategy. In addition to his editorial duties, Matt is one of the producers of the Cell Press podcast and the associate editor of CrossTalks, the Cell Press blog. He works extensively with journal web analytics and has organized conferences on sustainable development and single-cell biology. Prior to joining Cell Press as an editor, Matt worked as postdoctoral scholar in the Barnett Institute at Northeastern University. Matt received his BS in chemical engineering from Georgia Tech and his PhD in chemical engineering from University of California, Berkeley.



Nicole Neuman

**Senior Editor
Cell Press**

Nicole received her PhD in biochemistry from Tufts University, followed by postdoctoral work at Brigham and Women's Hospital with Dr. Lisa Henske where she investigated the mechanisms of nutrient sensing. She joined Cell Press as the editor of *Trends in Biochemical Sciences* in 2012 before moving to *Molecular Cell* in 2017. She is excited to help authors communicate their science through both reviews and original research articles to the broadest possible audience. In addition, she thinks deeply about the roles and responsibilities of editors in shaping the progress of science and enjoys experimenting with new ways to improve the publishing process.

Tamar Aprahamian Putiri

Founder (JetPub Scientific Communications)

(See bio under "Entrepreneurship & Executive Leadership")